



# MONTHLY MEMBERSHIP PROGRESS REPORT

District 33 K

Results as of: 04/30/2018

GMT: MAHESH CHITNIS

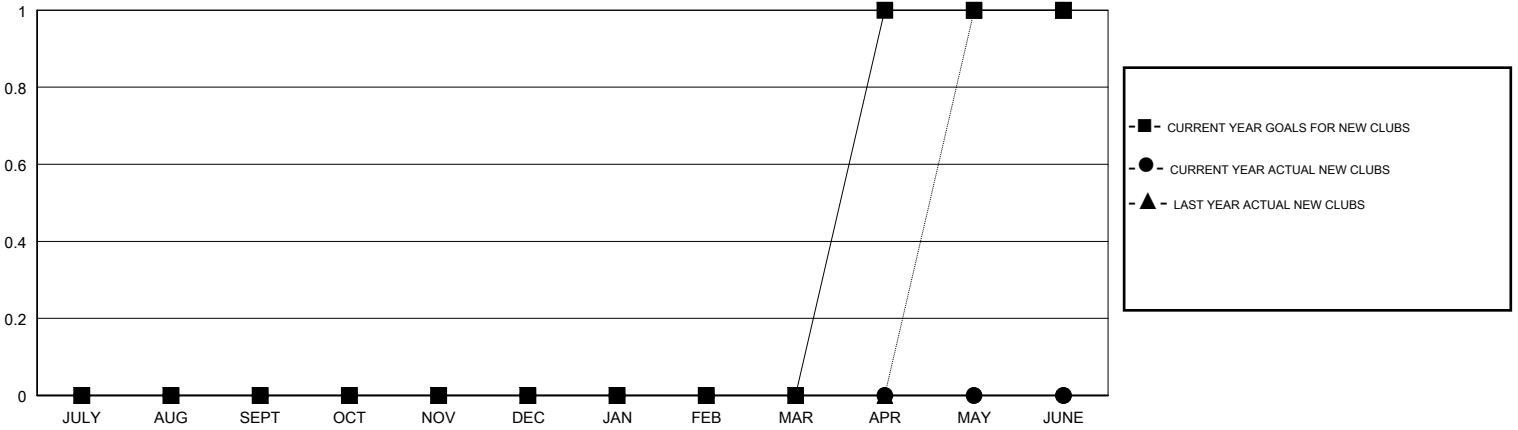
LOCATION MASSACHUSETTS

GMT CA

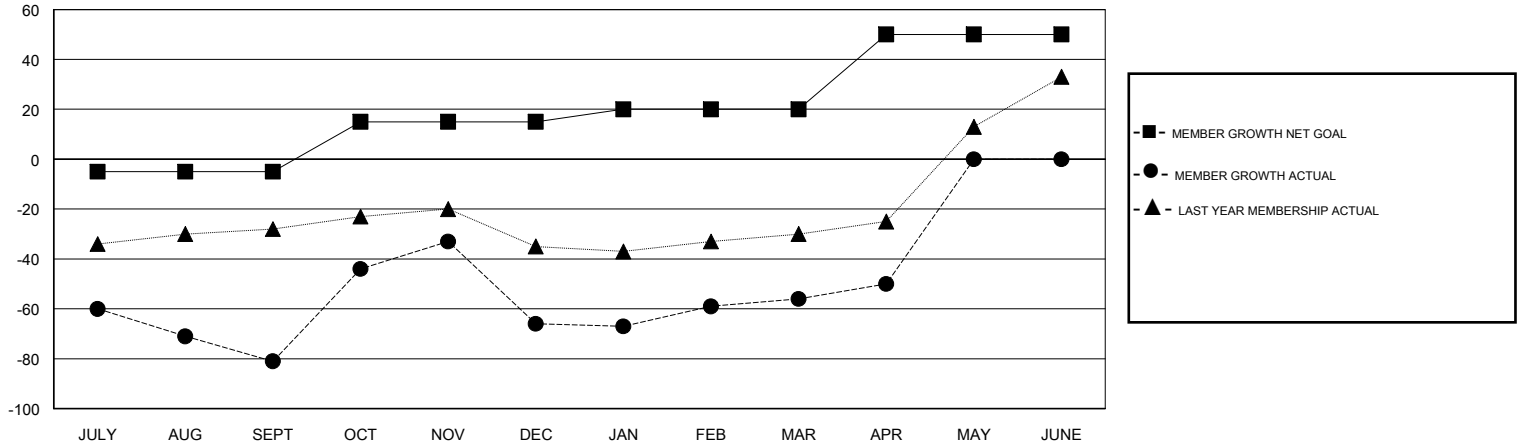
Clubs			
RESULTS FOR 2017-2018			
QUARTER	NEW CLUB GOAL	NEW CLUBS	DROPPED CLUBS
JULY/AUG/SEPT	0	0	0
OCT/NOV/DEC	0	0	1
JAN/FEB/MAR	0	0	0
APR/MAY/JUNE	1	0	0

Members			
RESULTS FOR 2017-2018			
QUARTER	MEMBER GROWTH NET GOAL	MEMBER GROWTH ACTUAL	DROPPED MEMBERS ACTUAL (including transfers)
JULY/AUG/SEPT	-5	21	92
OCT/NOV/DEC	20	83	65
JAN/FEB/MAR	5	46	28
APR/MAY/JUNE	30	15	8

GOALS AND ACTUAL NEW CLUBS CUMULATIVE



GOALS AND ACTUAL MEMBERS CUMULATIVE



DROPPED CLUBS: 1	32 CLUBS OF 48 ADDED 1 OR MORE NEW MEMBERS	<u>GENDER DISTRIBUTION</u>	
DROPPED MEMBERS		MALE	1,223 (65.82%)
DECEASED	22	FEMALE	635 (34.18%)
CLUB CANCELLED	11	Women Percentage Fiscal Year Goal: 20%	
OTHER	160	TOTAL FAMILY UNIT MEMBERS	208
TOTAL	193	FAMILY MEMBERS PAYING HALF DUES	106

[CLICK HERE FOR CUMULATIVE MEMBERSHIP DATA](#)